

Delivering accurate volumetric load calculations for haulage assests, dynamically.

The Walz Load Scanner System utilises laser technology and advanced algorithms to provide a dynamic, non-contact solution for managing material truck loads. This technology is poised to revolutionise the bulk material transportation industry.



ARTICULATED MINING
TRUCKS



RIGID FRAME MINING
TRUCKS



UNDERGROUND
MINING TRUCKS



DATA MANAGEMENT

The Walz Payload Scanner System has been designed to interface directly with mine-site data infrastructure systems. This allows for the data to be delivered to the key mine-site personnel for monitoring and analysis.



PAYLOAD PRO CLOUD SOLUTIONS



REALTIME
MONITORING

AutoTech | RiskTech | ManTech | ServTech | FleetTech | EngTech

WLS-M OFF-ROAD TRUCK VOLUMETRIC SCANNER SYSTEM



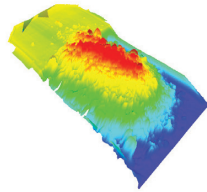
SPECIFICATIONS

- Volumetric load scanner for off-road trucks
- Accuracy $\pm 99\%$
- Designed for operations with a known truck fleet
- Dynamic/in-motion load scanning operation
- Built-in ticketing system
- Graphical 2D load images
- Realtime load volume measurement system
- Cloud-based reporting
- iOS/Android app integration
- Includes 12-month software subscription

WLS-M MINING LOAD SCANNER

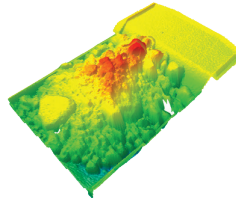
PRODUCTION MONITORING

- Autonomous operation
- Realtime load volumes
- Realtime load position analysis
- Production alerts



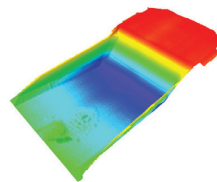
MATERIAL DENSITY

- Realtime material density per load
- Autonomous operation
- Mine despatch interface



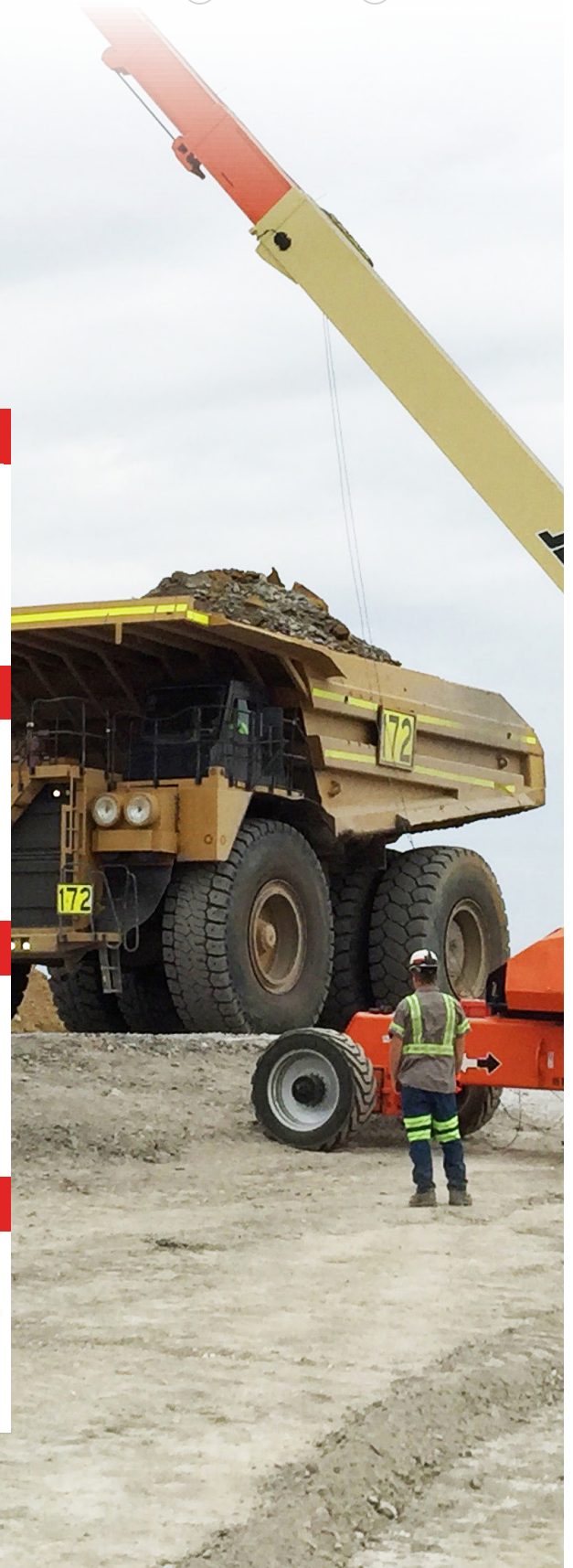
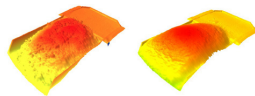
CARRY-BACK MONITORING

- Realtime carry-back monitoring
- Carry-back alerts to despatch
- Auto adjust for production tracking
- Autonomous operation



LOAD OPTIMISATION

- Manages shovel operator performance
- Improves load optimisation
- Reduces maintenance costs



REALTIME
MONITORING

AutoTech | RiskTech | ManTech | ServTech | FleetTech | EngTech

Eastern Cape - Port Elizabeth
T: +27 (0)82 450 6596

Free State - Bloemfontein
T: +27 (0)63 257 0505

Gauteng - Bedfordview (FleetTech)
T: +27 (0)10 329 0932

Gauteng - Jet Park (HQ)
T: +27 (0)11 823 5650

KwaZulu Natal - Pinetown
T: +27 (0)31 303 4129

Mpumalanga - Middelburg
T: +27 (0)13 692 8132

Northern Cape - Kathu
T: +27 (0)53 723 3415

North West - Rustenburg
T: +27 (0)14 596 5257

Western Cape - Cape Town
T: +27 (0)21 945 1453

Botswana - Gaborone
T: +267 399 4150

Mozambique - Tete
T: +258 252 20666

Zambia - Kitwe
T: +26 (0)21 222 5338

trading@trysome.co.za • www.trysome.co.za • PO Box 13677, Witfield 1467

This product may not be a stock item. Please speak to our sales representative about lead times. Lead times, price, and availability can only be determined on receipt of an official quote from our supplier. This can sometimes take up to 3 days.

Call us today!
TRYSOME
AUTO-ELECTRICAL ENGINEERING
Delivering Optimal **Uptime!**