



KISSLING TOGGLE SWITCH

Series 07

FEATURES

- High-quality silver alloy or gold-plated contacts
- Sealing technology meets IP65/IP6K5 standards
- 2- and 3-position switch actions
- Variety of available switching styles
- Locking options for individual needs

QUALITY SWITCH

The KISSLING toggle switches from TE Connectivity's product family have been developed under strict guidelines to meet international standards.

This series of toggle switches is mainly used as robust, industrial, and durable control switches in commercial vehicles. The housing of the Series 07 is made of thermoplastic and meets IP65/IP6K5 protection-class standards.

All these switches are sealed themselves and we offer additional sealing rings for improved mounting solutions and optional bellows for the handles. Our broad selection of toggles includes many options for switching configuration, termination type, load-carrying capabilities, and locking combinations.

TE Connectivity provides switches with and without switch guards to prevent accidental switching, as well as individual switches and complete switch assemblies with additional sealed housings for simplified vehicle assembly procedures.

APPLICATIONS



Truck



Medical Equipment



Bus



Ground
Support
Vehicles



Construction and
Agricultural
Vehicles



Plant and Industrial
Engineering

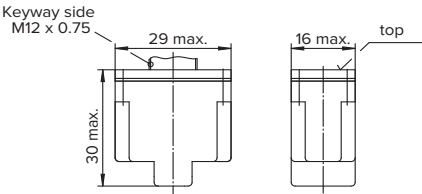
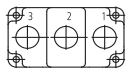
SPECIFICATIONS

Technical Data

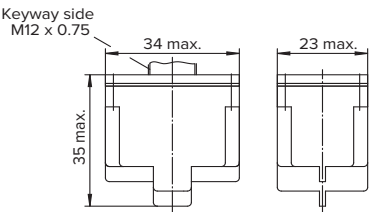
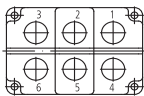
Housing Material	Thermoplast GF
Construction in Accordance With (IAW)	IEC 1 020
Seal	IP65 IEC 60529/IP6K5 DIN 40050 part 9/IP6K5 ISO 20653
Connection	IP00 IEC 60529/IP00 DIN 40050 part 9/IP00 ISO 20653
Current Carrying Parts	Copper-zinc alloy
Contact Material	Silver-alloy or gold-plated contacts
Temperature Range	-35 °C to +60 °C
Electrical Life (Nominal Load)	100 000 cycles
Nominal Voltage/ Continuous Current	12 VDC, 20 A ohmic load 28 VDC, 20 A ohmic load 28 VDC, 15 A L/R = 5 msec inductive load 115 VAC, 15 A inductive load
Min. Switching Capacity	12 VDC, 20 mA

TECHNICAL DRAWINGS

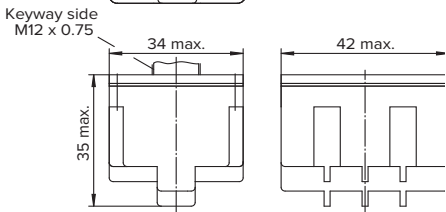
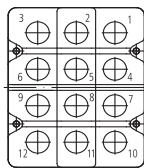
1 Pole



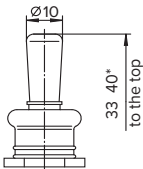
2 Pole



4 Pole

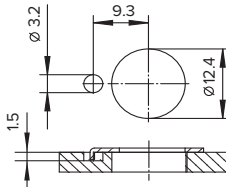


Type with bellows for use in severe conditions depending on specific environmental application:
CR-Neoprene ...933
FVMQ-Fluorsilicone ...955

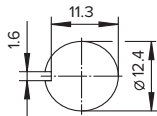


* valid for versions with locking

Mounting Detail:
With Locking Ring

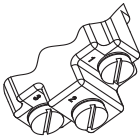


Mounting Detail:
Without Locking Ring

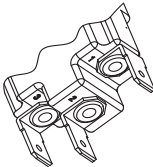


CONNECTIONS

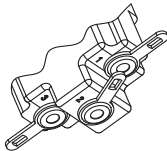
Screws M 3.5 x 6 - ISO 1580



FASTON DIN 46 244 - A 6.3 - 0.8
for receptacles



Soldering terminal to AWG 14



ORDERING INFORMATION

No. Poles

1	1 Pole
2	2 Pole
4	4 Pole

Connection

1	Screws M 3,5 x 6-ISO 1580
2	Faston DIN 46 244-A6,3-0,8
3	Soldering Terminal to AWG 14

Part Number

Example: 07.1.2.15 A 933

07.-----

Types With Bellows

933	CR-Neoprene
955	FVMQ-Fluorsilicone

Available Locking Options

—	Select On Page 4
---	------------------

Switching Styles

---	Select On Page 3
-----	------------------

SWITCHING STYLES

Switch - ing Styles	1 Pole			2 Pole			4 Pole		
	Toggle Position In			Toggle Position In			Toggle Position In		
	Keyway Side	Centre	Opposite Keyway Side	Keyway Side	Centre	Opposite Keyway Side	Keyway Side	Centre	Opposite Keyway Side
10	0	-	2-3	0 0	-	2-3 5-6	0 0 0 0	-	2-3 5-6 8-9 11-12
11	0 *	-	2-3	0 * 0	-	2-3 5-6	0 0 0 * 0	-	2-3 5-6 8-9 11-12
12	1-2 *	-	0	1-2 * 4-5	-	0 0	1-2 * 4-5 7-8 10-11	-	0 0 0 0
13	1-2	-	2-3	1-2 4-5	-	2-3 5-6	1-2 4-5 7-8 10-11	-	2-3 5-6 8-9 11-12
14	1-2 *	-	2-3	1-2 * 4-5	-	2-3 5-6	1-2 * 4-5 7-8 10-11	-	2-3 5-6 8-9 11-12
15	1-2	0	2-3	1-2 4-5	0 0	2-3 5-6	1-2 4-5 7-8 10-11	0 0 0 0	2-3 5-6 8-9 11-12
16	1-2 *	0	2-3	1-2 * 4-5	0 0	2-3 5-6	1-2 * 4-5 7-8 10-11	0 0 0 0	2-3 5-6 8-9 11-12
17	1-2 *	0	2-3 *	1-2 * 4-5	0 0	2-3 * 5-6	1-2 * 4-5 7-8 10-11	0 0 0 0	2-3 * 5-6 8-9 11-12
18	1-2	1-2	2-3	1-2 4-5	1-2 4-5	2-3 5-6	1-2 4-5 7-8 10-11	1-2 4-5 7-8 10-11	2-3 5-6 8-9 11-12
19	1-2	1-2	2-3 *	1-2 4-5	1-2 4-5	2-3 * 5-6	1-2 4-5 7-8 10-11	1-2 4-5 7-8 10-11	2-3 * 5-6 8-9 11-12
20				1-2 4-5	1-2 5-6	2-3 5-6	1-2 4-5 7-8 10-11	2-3 4-5 0 0	2-3 5-6 8-9 11-12
21				1-2 4-5	1-2 5-6	2-3 5-6			
22				1-2 * 4-5	1-2 5-6	2-3 * 5-6	1-2 * 4-5 7-8 10-11	2-3 4-5 0 0	2-3 * 5-6 8-9 11-12
23	1-2	2-3	2-3	1-2 4-5	2-3 4-5	2-3 5-6	1-2 4-5 7-8 10-11	2-3 4-5 7-8 11-12	2-3 5-6 8-9 11-12
24				1-2 4-5	1-2 5-6	2-3 * 5-6			
25				1-2 * 4-5	1-2 5-6	2-3 5-6	1-2 * 4-5 7-8 10-11	2-3 4-5 7-8 11-12	2-3 5-6 8-9 11-12
26							1-2 4-5 7-8 10-11	2-3 4-5 7-8 11-12	2-3 5-6 8-9 11-12
27							1-2 * 4-5 7-8 10-11	2-3 4-5 7-8 11-12	2-3 * 5-6 8-9 11-12

Bridge/* These positions are only momentary. All others are maintained.



LOCKING OPTIONS

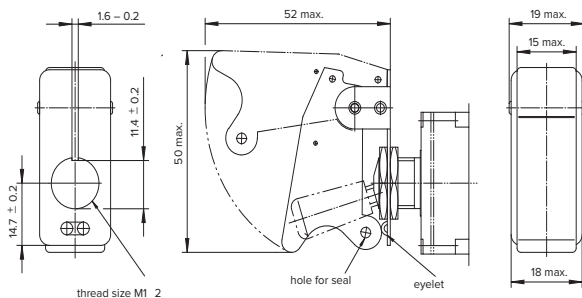
Available Locking Combinations		Toggle Position In			Recommended for Switching Style
		Keyway Side	Centre	Opposite Keyway Side	
A		locked	locked	locked	15, 18, 20, 21, 23, 26
B		locked	locked	locked out	15, 18, 19, 20, 21, 23, 24, 26
D		locked	locked out	locked	10, 13
E		locked out	locked	locked out	15-27
F		locked out	locked out	locked	10, 11, 12, 13, 14
G		locked	locked out	locked out	10, 13
K		locked out	locked	locked	15, 16, 18, 20, 21, 23, 25, 26
L		locked out	locked to keyway side	locked out	15-27
M		locked out	locked to opposite keyway side	locked out	15, 16, 18, 20, 21, 23, 25, 26
N		locked out	locked to opposite keyway side	locked out	15-27
P		locked	locked to keyway side	locked out	15, 18, 19, 20, 21, 23, 24, 26
T		locked	locked from middle to keyway side	locked from opposite keyway side to middle	15, 18, 20, 23, 26

→ = keyway side

ACCESSORIES

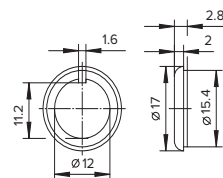
Switch Guard:

Prevent accidental switching of toggle



Seal Ring: 08.0.0.50

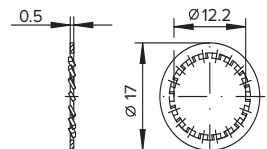
For sealing of mounting hole



1 POLE

(Tiefe 41.5 | depth 41.5)

Tooth Lock Washer

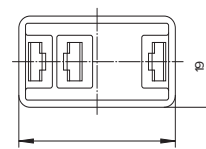


2 POLE

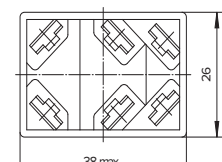
(Tiefe 41.5 | depth 41.5)

Receptacle:

For quick connection, increased safety, and prevents fastener contact (IP20) inverse-polarity protection. Available for switches with faston connection.



08.1.2.05



08.2.2.05



AutoTech | RiskTech | ManTech | ServTech | FleetTech | EngTech

Eastern Cape - Port Elizabeth

T: +27 (0)82 450 6596

Free State - Bloemfontein

T: +27 (0)63 257 0505

Gauteng - Bedfordview (FleetTech)

T: +27 (0)10 329 0932

Gauteng - Jet Park (HQ)

T: +27 (0)11 823 5650

KwaZulu Natal - Pinetown

T: +27 (0)31 303 4129

Mpumalanga - Middelburg

T: +27 (0)13 692 8132

Northern Cape - Kathu

T: +27 (0)53 723 3415

North West - Rustenburg

T: +27 (0)14 596 5257

Western Cape - Cape Town

T: +27 (0)21 945 1453

Botswana - Gaborone

T: +267 399 4150

Mozambique - Tete

T: +258 252 20666

Zambia - Kitwe

T: +26 (0)21 222 5338

trading@trysome.co.za • www.trysome.co.za • PO Box 13677, Witfield 1467

These products may not be stock items. Please speak to our sales representative about lead times. Lead times, price, and availability can only be determined on receipt of an official quote from our supplier. This can sometimes take up to 3 days.

Call us today!
TRYSOME
 AUTO-ELECTRICAL ENGINEERING
 Delivering Optimal **Uptime!**