

KISSLING BATTERY DISCONNECTOR

Series 35/500 A

FEATURES

- Sealed housing meets IP67 and IP6K9K standards
- Robust design
- 6 G shock and 4 G vibration resistance
Some options up to 50 G shock and 10 G vibration are possible in the 500 A range
- Main contact current rated for continuous current and 100% duty cycle
- Battery disconnect under load in case of an emergency
- Variable mounting options
- Safety in vehicle service by lockable options

APPLICATIONS



Truck



Aircraft



Railway



Ground Support Vehicles



Bus



Construction and Agricultural
Vehicles

Our manually operated battery disconnecter meets the most demanding requirements in all vehicle applications. The nominal current ratings refer to continuous DC at up to 100% duty cycle and the switches are built to switch under full load. Our battery disconnectors can handle very high overloads, up to 5x the rated continuous current level for up to 10 seconds.

All series 35 battery disconnectors are sealed with a technology that meets the IP67 and IP6K9K (steam cleaning) standards, and the switches are designed to operate at temperatures between -40 °C and +85 °C. Options include single or dual pole configurations, various mounting and locking (security) alternatives as well as different shapes and colours of the operating handles.

Battery disconnectors from our KISSLING product family can be operated under full load to ensure a safe disconnection from the battery in emergency conditions. For fleet safety, the range also has optional protection against theft or unauthorised use of vehicles or equipment by removable or lockable operating elements, as well as lockout/tagout capable switches.

SPECIFICATIONS

Technical Data	
Temperature Range	-40 °C to +85 °C
Protection	IP67/IEC 529
Vibration	10 G (50 - 2 000 Hz)
Shock	6 G, 11 msec. Up to 50 G on some models
Thread Sizes/Torque	M10 = 15 - 20 Nm M12 = 18 - 22 Nm

KISSLING BATTERY DISCONNECTOR

Series 35/500 A

Electrical Data	
Mechanical Life	10 000 cycles (1-pole)/5 000 cycles (2-pole) *Mechanical long-life options are possible with custom configuration.
Min. Insulation Resistance	100 mΩ
Dielectric Withstanding Voltage	1050 V/1 min at 50 Hz
Max. Contact Drop Max. Load	150 mV
Voltage Range	Up to 32 VDC nominal
Duty Rating Continuous	500 A
Overload	1 500 A - 240 sec./2 000 A - 90 sec./2 500 A - 10 sec. Overload only possible with contacts already closed. Do not actuate switch under overload conditions.
Wire Section	Min. 250 mm ²
Mounting Position	Any orientation
Switching Capability	Only possible up to continuous duty rating

AVAILABLE KEYS

0

1

2

3

4

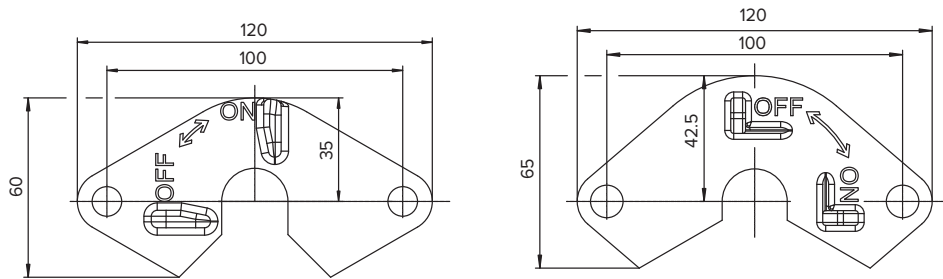
5

Key Options	
0	Standard
1	Standard long
2	45° turn off
3	T-handle
4	Double wing
5	Pointer key

Key With Chain	
6	Standard
7	Standard long
8	45° turn off
9	T-handle

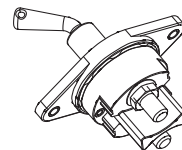
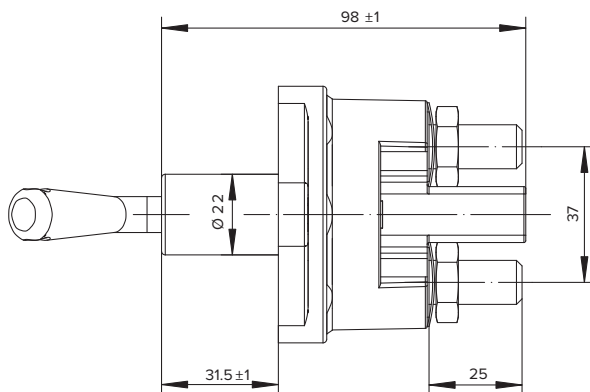
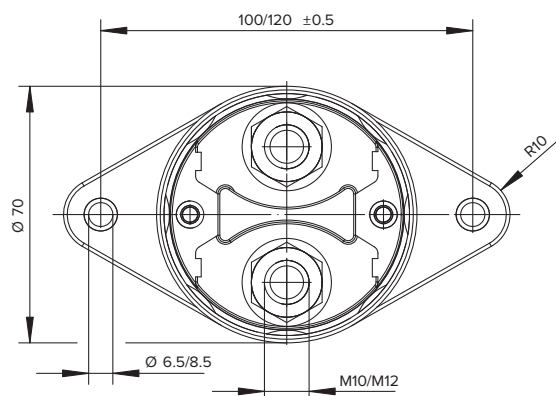
KEY HOLDER

Not for switches with central mounting/optional available

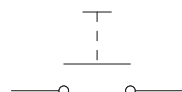


TECHNICAL DRAWINGS

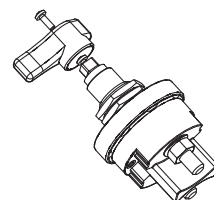
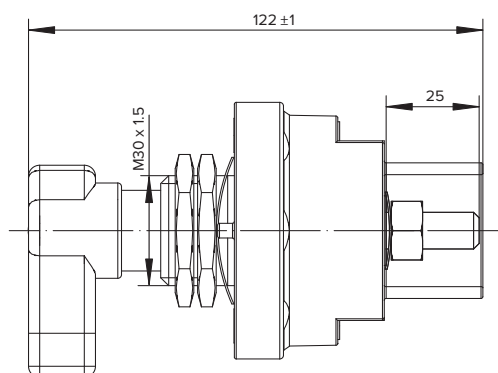
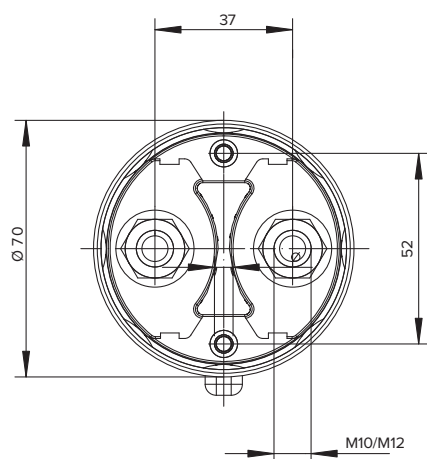
1-pole with long flange



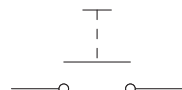
Circuit



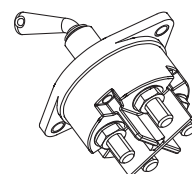
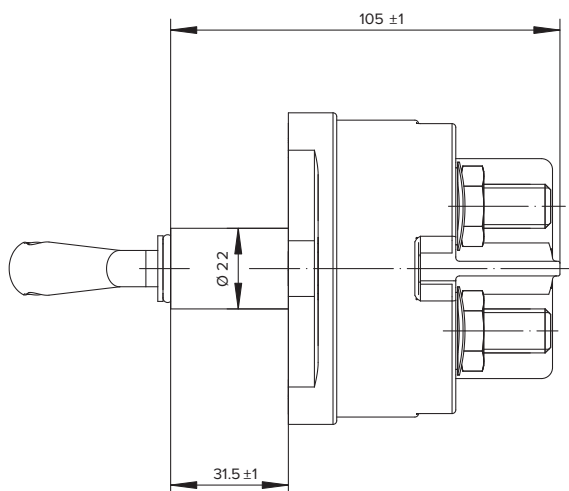
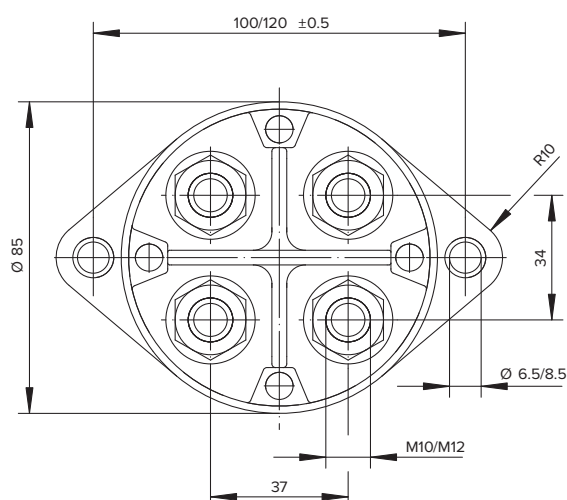
1-pole with central mounting



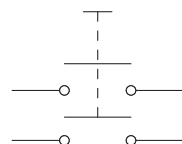
Circuit



2-pole with long flange



Circuit



ORDERING INFORMATION

Part Number

Example: 35-510-000-R

35 - _ _ _ - _ _ _ - _ _ _

If the PN has a “-9xx” added at the end, it indicates some form of customisation to the basic PN.

Current

5	Current 500 A
---	---------------

No. Poles

1	1-Pole
2	2-Pole

Mounting Options

1	Long Flange 100/Ø 6.5
2	Long Flange 120/Ø 6.5
3	Central Mounting
4	Long Flange 100/Ø 8.5
5	Long Flange 120/Ø 8.5

Thread

1	M10
2	M12

Auxiliary Contact (Upon Request)

A2	Auxiliary Contact 2 A
A5	Auxiliary Contact 5 A

Key Colours

R	Red
S	Black
GN	Green
GE	Yellow

Key Type

0	Removable
1	Not Removable

Key Options

X	See Overview Page 2
---	---------------------



AutoTech | RiskTech | ManTech | ServTech | FleetTech | EngTech

Eastern Cape - Port Elizabeth

T: +27 (0)82 450 6596

Free State - Bloemfontein

T: +27 (0)63 257 0505

Gauteng - Bedfordview (FleetTech)

T: +27 (0)10 329 0932

Gauteng - Jet Park (HQ)

T: +27 (0)11 823 5650

KwaZulu Natal - Pinetown

T: +27 (0)31 303 4129

Mpumalanga - Middelburg

T: +27 (0)13 692 8132

Northern Cape - Kathu

T: +27 (0)53 723 3415

North West - Rustenburg

T: +27 (0)14 596 5257

Western Cape - Cape Town

T: +27 (0)21 945 1453

Botswana - Gaborone

T: +267 399 4150

Mozambique - Tete

T: +258 252 20666

Zambia - Kitwe

T: +26 (0)21 222 5338

Call us today!

TRYSOME

AUTO-ELECTRICAL ENGINEERING

Delivering Optimal **Uptime!**

trading@trysome.co.za • www.trysome.co.za • PO Box 13677, Witfield 1467

This product may not be a stock item. Please speak to our sales representative about lead times. Lead times, price, and availability can only be determined on receipt of an official quote from our supplier. This can sometimes take up to 3 days.