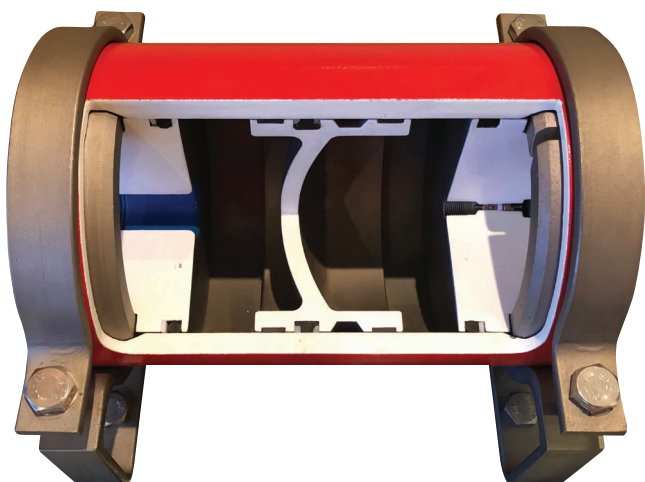


### Piston Accumulators



**Powerstart piston accumulators** store the hydraulic oil under pressure provided by nitrogen gas. Designed and assembled to stringent international standards. They are made of certified seamless hydraulic tubing for total safety.

### Features

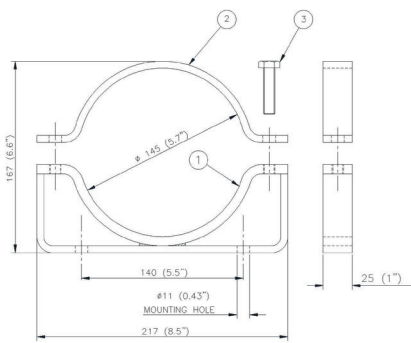
- During severe over pressurisation, seals extrude to vent gas pressure prior to structural failure.
- End-cap retention design prevents disassembly if accumulator is pressurised.
- The protector plug's quick-exhaust slot safeguards the operator during disassembly in the unlikely event of the valve core failing.
- Pre-charge valve is protected from damage.
- The unique piston T-seal cannot roll.
- Accumulators conform to BS EN 14359:2017 and PED 2014/68/EU and are certified and witnessed by Lloyd's Register of Shipping as a standard.

### Specifications

<b>Construction:</b>	Certified steel tube - seamless to DIN 2391
<b>Working pressure/ Test pressure:</b>	23 MPa (3 380 psi)/ 36.2MPa (5 300 psi)
<b>Design pressure:</b>	25.3 MPa (3700 psi)
<b>Average burst pressure:</b>	120 MPa (17 400 psi)
<b>Pre-charge pressure:</b>	10 MPa (1450 psi) standard (different pressures on request)
<b>Fluid media:</b>	Mineral oil
<b>Viscosity range:</b>	ISO 32 to 46 (SUS 140 to 230)
<b>Temperature range:</b>	-40 °C to +100 °C (-40 °F to + 212 °F)
<b>Seals:</b>	Nitrile (std.), Viton (optional)
<b>Gas valve assembly:</b>	Stainless steel tamper resistant
<b>Gas seal:</b>	Twin - bubble tight

Part Number	Capacity		Length		Mass		Part Number	Capacity		Length		Mass	
	ltr.	USG	mm	in.	kg	lbs.		ltr.	USG	mm	in.	kg	lbs.
TA010SC	1.0	0.25	230	9.0	15.5	34	TA075SC	7.5	1.95	740	29.0	34.5	76
TA025SC	2.5	0.66	350	13.8	19.5	43	TA100SC	10.0	2.60	965	38.0	40.5	89
TA040SC	4.0	1.06	475	18.7	24.0	53	TA120SC	12.0	3.20	1125	44.0	46.0	101
TA055SC	5.5	1.50	600	24.0	28.0	62	TA160SC	16.0	4.20	1450	57.0	57.0	125

## Accumulator Bracket



### Part Number:

TAC-17

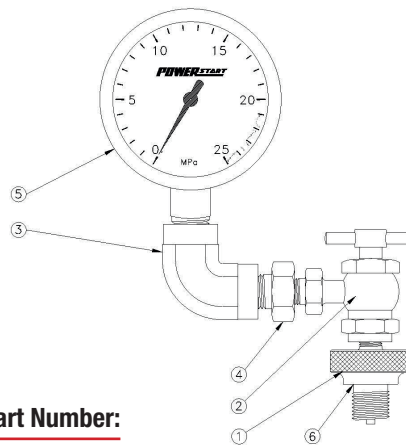
### Specifications:

<b>Mass:</b>	1.1 kg (2.4 lbs)
<b>Construction:</b>	Mild Steel
<b>Finish:</b>	Zinc plated and yellow passivated
<b>Clamp Size:</b>	145 mm (5.7'') Diameter tube

Item	Description	Qty	Part No.
1	Base	1	TAC-17-1
2	Clamp	1	TAC-17-2
3	Bolt	2	TAC-17-3

**Note:** The part number TAC-17 refers to one bracket (i.e. one bracket top, one bracket bottom and two bolts). For most installations, two brackets will be required.

## Accumulator Test Kit



### Part Number:

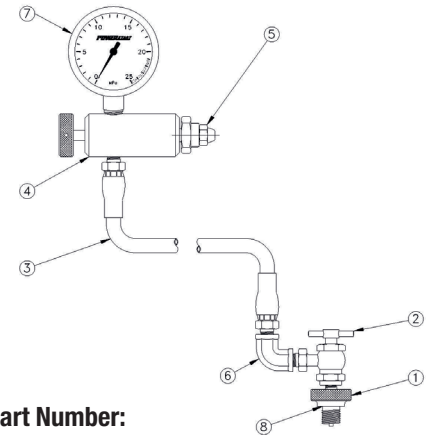
TACTK - Test kit with metric (0 - 25 MPa) gauge  
TACTK-U - Test kit with imperial (0 - 3000 psi) gauge

### Features:

- Mass 550 grams (1.2 lbs)
- Compact lightweight glycerine filled gauge
- Adaptor 1 is of stainless steel
- Design minimises gas loss when checking pre-charge pressure
- One piece forged brass gauge and stem
- Maximum allowable working pressure 210 bar (3 080 psi)

Item	Description	Qty	Part No.
1	Adaptor	1	TACGS-01
2	Actuator	1	TACGS-02
3	Elbow	1	TACTK-01
4	Reducer	1	TACTK-02
5	Pressure gauge (metric MPa markings)	1	TPG63-25
5	Pressure gauge (imperial psi markings)	1	TPG63-25-U
6	Steel	1	TAC-16

## Accumulator Charge Kit



### Part Number:

TACCK - Charge kit with metric (0 - 25 MPa) gauge  
TACCK-U - Charge kit with imperial (0 - 3000 psi) gauge

### Features:

- Mass 1.225 kg (2.7 lbs)
- Glycerine-filled gauge
- Gauge mounted on gas bottle is less subject to damage/abuse
- Adaptor 1 is of stainless steel
- One piece forged-brass gauge case and stem
- 3/4" BSPF thread to fit standard nitrogen bottles
- 1.8 m Long hose
- Maximum allowable working pressure 210 bar (3 080 psi)

Item	Description	Qty	Part No.
1	Adaptor	1	TACGS-01
2	Actuator	1	TACGS-02
3	Hose (1.8 m long)	1	TACCK-01
4	Pre-charge valve	1	TACCK-02
5	Bottle adapter	1	TACCK-04
6	Elbow	1	TACCK-05
7	Pressure gauge (metric MPa markings)	1	TPG63-25
7	Pressure gauge (imperial psi markings)	1	TPG63-25-U
8	Seal	1	TAC-16

These may not be a stock items. Please speak to your sales representative about lead times. Lead times, price and availability can only be determined on receipt of an official quote from our supplier. This can sometimes take up to 3 days.

### South Africa, Gauteng, Jet Park - Head Office:

**KwaZulu Natal:**  
T: +27 (0)31 303 4129

**Mpumalanga:**  
T: +27 (0)13 692 8132

**Northern Cape:**  
T: +27 (0)53 723 3415

**Western Cape:**  
T: +27 (0)21 945 1453

**North West:**  
T: +27 (0)14 596 5257

**Eastern Cape:**  
T: +27 (0)81 036 9111

T: +27 (0)11 823 5650

**Free State:**  
T: +27 (0)63 257 0505

**Botswana, Gaborone:**  
T: +267 399 4150

**Botswana, Jwaneng:**  
T: +267 588 7617

**Botswana, Letlhakane:**  
T: +267 297 8568

**Mozambique, Tete:**  
T: +258 252 20666

**Zambia, Kitwe:**  
T: +26 (0)21 222 5338

Call us today!  
**TRYSOME**  
AUTO-ELECTRICAL ENGINEERING