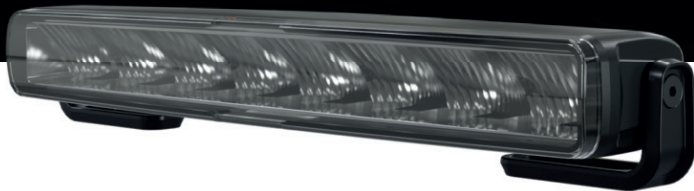


MIRAGE... ILLUMINATING YOUR WAY FORWARD!



The **Mirage** is our very first LED light bar for on- and off-road vehicles, combining heavy-duty standards with an automotive look. This clean-cut ECE-approved auxiliary light ticks all the boxes in terms of durability and design, with smooth edges all around to prevent ice and dirt from accumulating, and a hard-coated polycarbonate lens for superb impact resistance.

The light beam is designed wider than average for the best possible vision. An even light distribution combined with the warm colour temperature of 4500 K gives you a flicker and streak-free illumination in visually demanding circumstances such as rain, dust, fog, or snow. Possible to mount both high and low, simply flip it to suit your application.

The **Mirage** comes in at a staggering 6200 lumens, and when the going gets tough, a 7100 lumens boost function for off-road traffic.

Key Features

- Operational lumens output: 6200 lumens (Boost: 7100 lumens)
- Simply flip to suit your vehicle

Technical Data

Operational Lumens Output	6200 lumens (Boost: 7100 lumens)
Colour Temperature	4500 K
Nominal Voltage DC	12-24 V
Input Voltage DC	9-32 V
Power Consumption 12/24 V	84 w (Boost: 118 w)
Nominal Current at:	7 A @ 12 V / 3.3 A @ 24 V, (Boost: 9.8 A @ 12 V, 4.4 A @ 24 V)
Connector	Built-in Deutsch DT-3 (3-pin)
Mount	2-Piece M8 Screw
Shock	60 G
Lens	PC
Body/Housing	Aluminium
Weight	2.8 kg
IP Rating	IP68, IP6K9K
Salt Spray Test	ISO 9227 240H
Shock 60 G	IP68, IP6K9K
EMC	CISPR 25 Class 5, ISO 13766, ISO 14982, ISO 7637-2
ECE Approvals	R112 R10 (Boost for off-road use only)
Operating Temperatures:	-40 °C... +85 °C (Full Power -40 °C... +50 °C)
Electronics:	Integrated

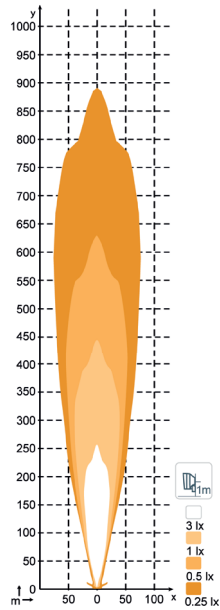
Connector

Built-in Deutsch DT-3 (3-pin)

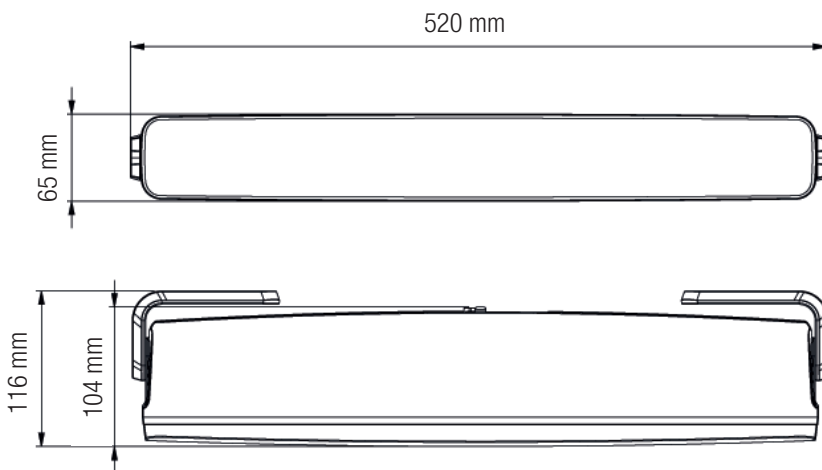


Light Patterns

Mirage, 6200 Lumens Standard - T997-100B



Dimensions



This may not be a stock item. Please speak to our sales representative about lead times. Lead times, price and availability can only be determined on receipt of an official quote from our supplier. This can sometimes take up to 3 days.

South Africa, Gauteng, Jet Park - Head Office:	T: +27 (0)11 823 5650		
KwaZulu Natal:	T: +27 (0)31 303 4129	Mpumalanga:	T: +27 (0)13 692 8132
Northern Cape:	T: +27 (0)53 723 3415	Free State:	T: +27 (0)63 257 0505
North West:	T: +27 (0)14 596 5257	Botswana, Gaborone:	T: +267 399 4150
		Botswana, Letlhakane:	T: +267 297 8568
		Mozambique, Tete:	T: +258 252 20666
		Zambia, Kitwe:	T: +26 (0)21 222 5338

trading@trysome.cc • www.trysome.co.za • PO Box 13677, Witfield 1467

Call us today!

 **TRYSOME**

AUTO-ELECTRICAL ENGINEERING