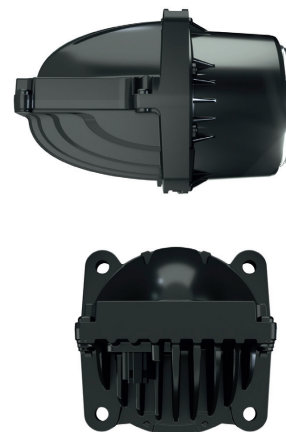


TOP-OF-THE-LINE LIGHT OUTPUT AND PATTERN



Key Features

Durable headlight module with top-of-the-line light output and pattern.

TOP PERFORMANCE: Bumblebee's light output and range places it amongst the top of the options currently available on the market. The stunningly even light pattern is free of any streaks or irregularities.

FLEXIBLE: Bumblebee is manufactured as a high beam or low beam version. The low beam is available in 3 optical variants: left-handed, right-handed and symmetric. Easy mounting with fascia mount.

ECE APPROVED: Bumblebee is ready to hit the road when you are.

Technical Data

Operating Temperature:	-40° C... +85° C
IP Rating:	IP68, IP6K9K
Salt Mist:	ISO 9227 240 h
Shock:	60 G
Vibration:	4 Grms
Weight:	0.97 kg

Applications

- Mining – Articulated dump trucks, 90 mm halogen replacement
- Agriculture – Tractors, 90 mm halogen replacement
- Transport – Buses, 90 mm halogen replacement
- Military - 90 mm halogen replacement
- OE Manufacturers – 90 mm ECE approved full LED head lamp



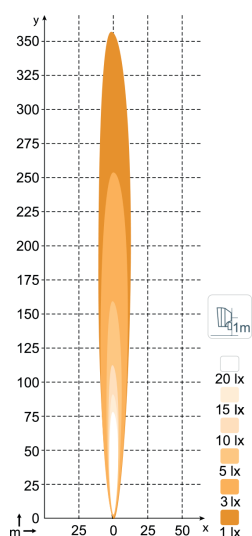
Technical Specifications

Nominal/Input Voltage DC:	12 V, 24 V/ 9 - 32 V
Power Consumption: 12/24 V	High Beam 17 w, Low Beam 17 w
Nominal Current: 12/24 V	High Beam 1.4 A @ 12 V, 0.7 A @ 24 V, Low Beam 1.4 A @ 12 V, 0.7 A @ 24 V
Mount:	3 pcs M6 Screw
Connector:	Built-in Deutsch 2-pin
EMC:	CISPR 25 Class 5, ISO 14982, ISO 13766, EN 13309, ISO 11452, ISO 7637-2, EN 61000-4-2, ISO 10605

Electronics:	Integrated / Isolated
Shock:	60 G
Vibration:	4 Grms
IP Rating:	IP68, IP6K9K
Weight:	0.97 kg
Lens/Body:	Glass/Aluminium
Operating Temperatures:	-40° C... +85° C (Full Power -40° C - +50° C)

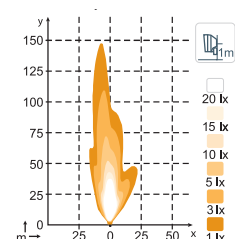
Single module light patterns

High Beam R112B - T960-401



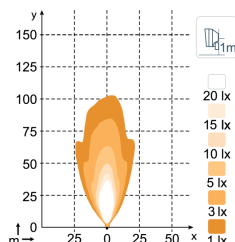
Low Beam LHT R112B - T960-403

Illuminates the left side of the road farther



Low Beam (Symmetric) R113D

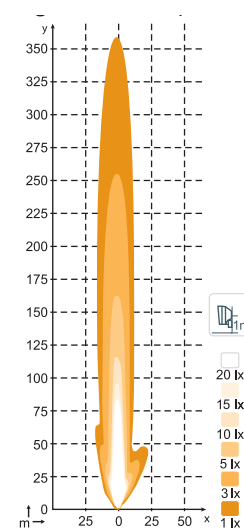
Illuminates the road evenly



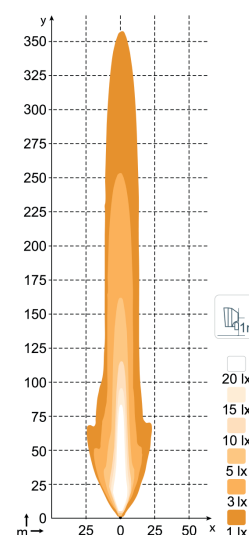
Set-up with 2 x High Beam and 2 x Low Beam

High Beam & Low Beam

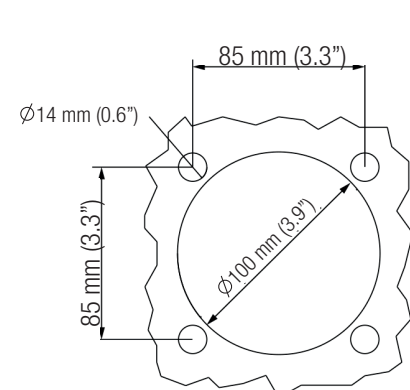
Illuminates the left side of the road farther



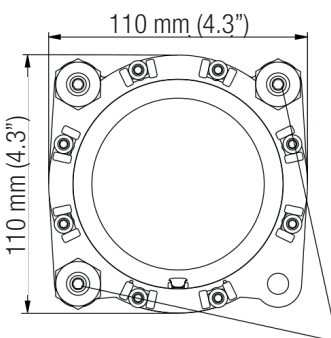
High Beam & Low Beam (Symmetric)



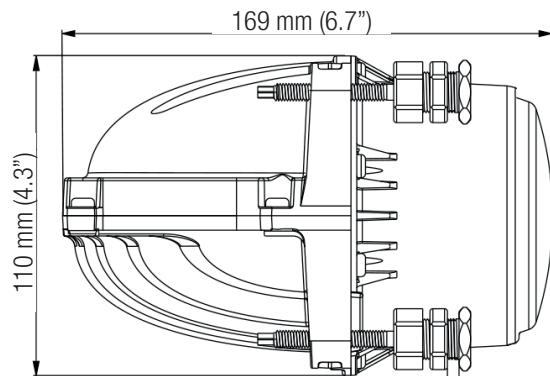
Mounting Plate



Dimensions



Adjust screws to change horizontal and vertical tilt angle (max 5°)



Mounting plate max 6 mm

This may not be a stock item. Please speak to our sales representative about lead times. Lead times, price and availability can only be determined on receipt of an official quote from our supplier. This can sometimes take up to 3 days.

Gauteng (HO):

T: +27 (0)11 823 5650

North West:

T: +27 (0)14 596 5257

Eastern Cape:

T: +27 (0)81 036 9111

Botswana, Letlhakane:

T: +267 297 8568

KwaZulu Natal:

T: +27 (0)31 303 4129

Mpumalanga:

T: +27 (0)13 692 8132

Free State:

T: +27 (0)63 257 0505

Mozambique:

T: +258 252 20666

Northern Cape:

T: +27 (0)53 723 3415

Western Cape:

T: +27 (0)21 945 1453

Botswana, Jwaneng:

T: +267 588 7617

Zambia:

T: +26 (0)21 222 5338