



KISSLING PUSH-BUTTON SWITCH

Series TS

FEATURES

- Central thread & flange mounting options
- DIN connector, solder pins, or flying lead electrical connection options
- Various actuator colours available both with or without function symbols
- Indicator light option (integrated LED)

APPLICATIONS



Commercial Vehicles



Plant and Industrial Engineering



System Start/Stop Applications



Remote Control Panels

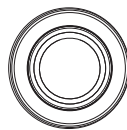
QUALITY SWITCH

Our push-button switches are designed and manufactured to the highest quality standards. The switches are available as 1-pole and 2-pole versions with change-over function. These switch types are suited for various mounting conditions and meet your individual requirements. The push button itself is available in various colours, with different symbols on the actuator and also as an illuminated version.

The push-button switch is characterised by its IP6K9K sealing rating and its high shock and vibration resistance. It is highly suitable for performance under demanding environmental conditions.

ACTUATOR SYMBOLS

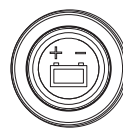
Without Print



Stop



Battery



Lamp



Start



Motor



Other types and special types upon request

SPECIFICATIONS

Technical Data

Temperature Range	-40 °C to +90 °C
Thread Sizes/Torque	M30 = max. 5 Nm M6 = max 7 Nm
Pre-Travel	1.5 ± 0.5 mm
Contact Travel	2.5 ± 0.5 mm
Operating Force	Max. 40N
Mechanical Life	100 000 cycles
Frequency	Max. 100/min
Voltage Range	9 VDC - 32 VDC
Resistive Load	10 mA - 5 A

ORDERING INFORMATION

Part Number

Example: TS-212-RT51

TS- - - - -

Series

TS	Push-Button Switch
----	--------------------

Housing

1	Socket
2	Central Thread

Switching function

0	Indicator Light
1	Change-Over 1 Pole
2	Change-Over 2 Pole

Connector

1	Bayonet Connection
2	Solder Connection
3	Cable Connection

Lighting

1	Without
2	With (only 1 pole)

Actuator Symbol

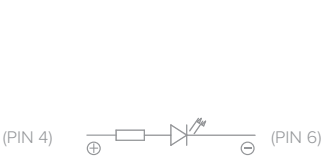
1	Without Print
2	Battery
3	Start
4	Stop
5	Lamp
6	Motor

Actuator Colour

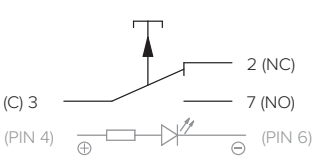
RT	Red
BL	Blue
SW	Black
GE	Yellow
GN	Green

CIRCUITS

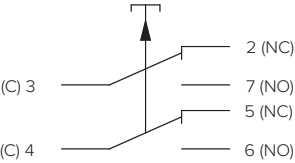
Indicator Light



Change-Over 1 Pole

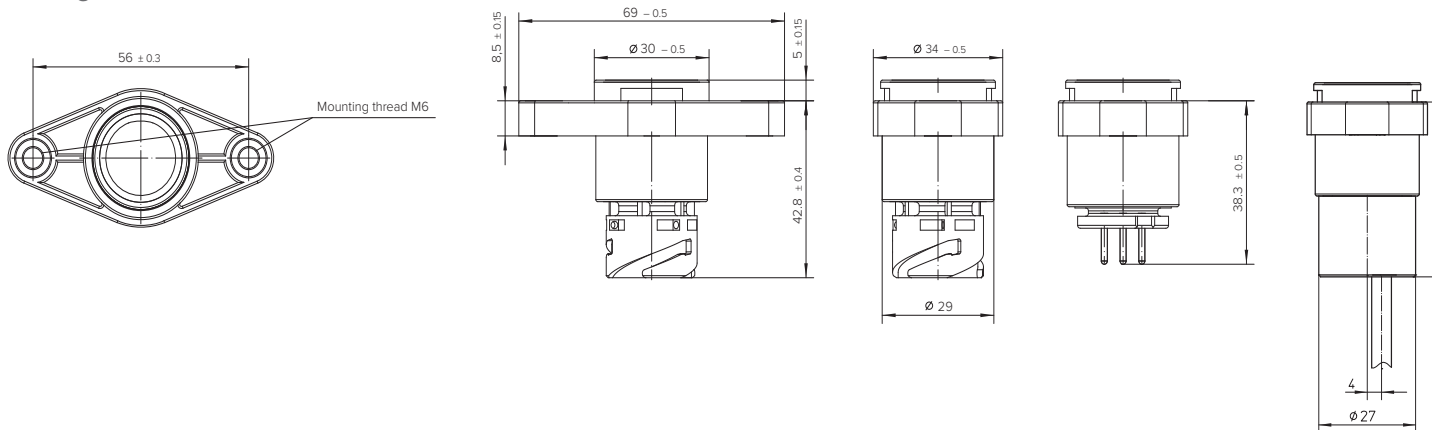


Change-Over 2 Pole



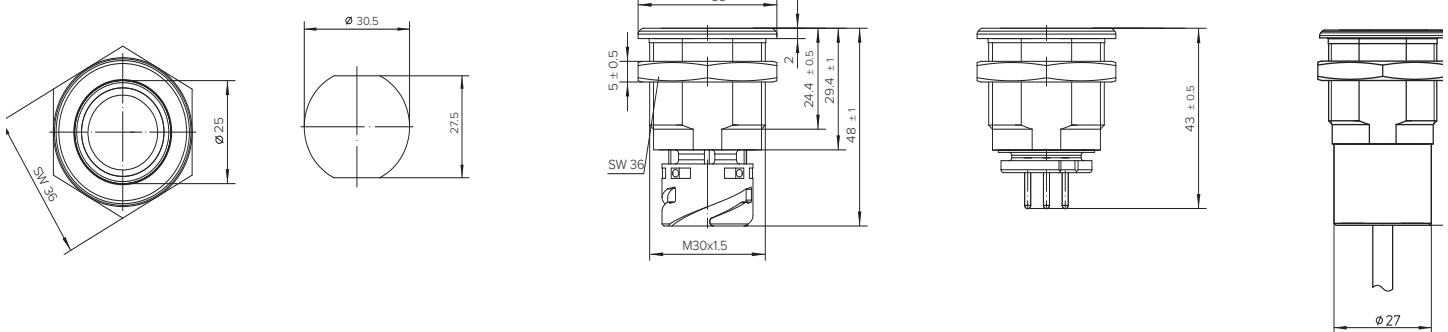
TECNICAL DRAWINGS

Housing Socket



Socket

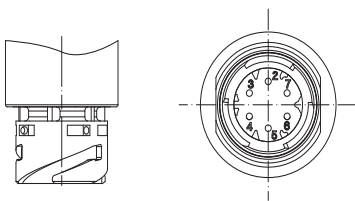
Central Thread



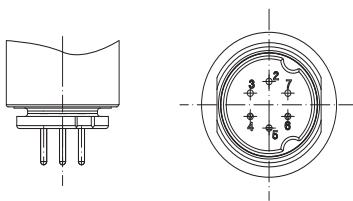
CONNECTORS

Bayonet Connection

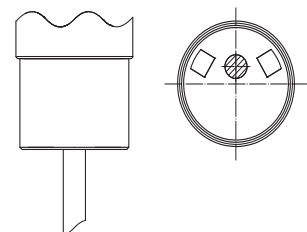
DIN 72585/ISO 15170-A1-2.1-Ag/K1



Solder Connection



Cable Connection



AutoTech | RiskTech | ManTech | ServTech | FleetTech | EngTech

Eastern Cape - Port Elizabeth

T: +27 (0)82 450 6596

Free State - Bloemfontein

T: +27 (0)63 257 0505

Gauteng - Bedfordview (FleetTech)

T: +27 (0)10 329 0932

Gauteng - Jet Park (HQ)

T: +27 (0)11 823 5650

KwaZulu Natal - Pinetown

T: +27 (0)31 303 4129

Mpumalanga - Middelburg

T: +27 (0)13 692 8132

Northern Cape - Kathu

T: +27 (0)53 723 3415

North West - Rustenburg

T: +27 (0)14 596 5257

Western Cape - Cape Town

T: +27 (0)21 945 1453

Botswana - Gaborone

T: +267 399 4150

Mozambique - Tete

T: +258 252 20666

Zambia - Kitwe

T: +26 (0)21 222 5338

Call us today!
TRY SOME
AUTO-ELECTRICAL ENGINEERING
Delivering Optimal **Uptime!**

trading@trysome.co.za • www.trysome.co.za • PO Box 13677, Witfield 1467

This product may not be a stock item. Please speak to our sales representative about lead times. Lead times, price, and availability can only be determined on receipt of an official quote from our supplier. This can sometimes take up to 3 days.