

Delivering accurate volumetric load calculations for haulage assests, dynamically.

The Walz Load Scanner System utilizes laser technology and advanced algorithms to provide a dynamic non-contact solution for managing material truck loads. This technology is poised to revolutionize the bulk material transportation industry.



ARTICULATED MINING TRUCKS

RIGID FRAME MINING TRUCKS

UNDERGROUND MINING TRUCKS



DATA MANAGEMENT

The Walz Payload Scanner System has been designed to interface directly with mine site data infrastructure systems. This allows for the data to be delivered to the key mine site personnel for monitoring and analysis.



PAYLOAD PRO CLOUD SOLUTIONS



WLS-M OFF ROAD TRUCK VOLUMETRIC SCANNER SYSTEM



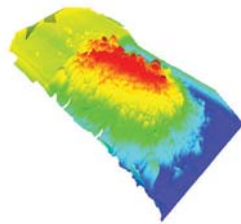
SPECIFICATIONS

- Volumetric load scanner for off-road trucks
- Accuracy \pm 99%
- Designed for operations with a known truck fleet
- Dynamic/in-motion load scanning operation
- Built-in ticketing system
- Graphical 2D load images
- Real-time load volume measurement system
- Cloud-based reporting
- iOS/Android app integration
- Includes 12-month software subscription

WLS-M MINING LOAD SCANNER

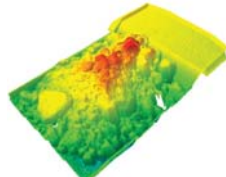
PRODUCTION MONITORING

- Autonomous operation
- Real-time load volumes
- Real-time load position analysis
- Production alerts



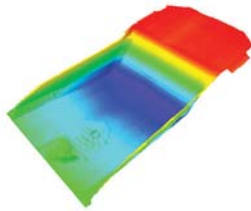
MATERIAL DENSITY

- Real-time material density per load
- Autonomous operation
- Mine dispatch interface



CARRY-BACK MONITORING

- Real-time carry-back monitoring
- Carry-back alerts to dispatch
- Auto adjust for production tracking
- Autonomous operation



LOAD OPTIMIZATION

- Manages shovel operator performance
- Improve load optimization
- Reduce maintenance costs



This product may not be a stock item. Please speak to our sales representatives about lead times. Lead times, price and availability can only be determined on receipt of an official quote from our supplier. This can sometimes take up to 3 days.

Gauteng (HO):

T: +27 (0)11 823 5650

KwaZulu Natal:

T: +27 (0)31 303 4129

Northern Cape:

T: +27 (0)53 723 3415

North West:

T: +27 (0)14 596 5257

Mpumalanga:

T: +27 (0)13 692 8132

Western Cape:

T: +27 (0)21 945 1453

Zambia:

T: +26 (0)21 222 5338

Mozambique:

T: +258 252 20666

Botswana, Jwaneng:

T: +267 588 7617

Botswana, Lethakane:

T: +267 297 8568