

The logo for VEI (Vibratory Equipment International) consists of the letters 'VEI' in a bold, white, serif font, centered within a solid blue square. A horizontal white line is positioned below the letters.

# A NEW GENERATION OF POWERFUL YET SIMPLE-TO-USE ONBOARD WEIGHING SOLUTIONS

The installation of accurate and easy-to-view onboard weighing solutions and payload monitoring enable fleet operators to control loads moved, driving down haulage costs and improving productivity.

The excavator machine works in remote areas where truck scales are far away and therefore the accuracy of the loads into the trucks has a prime importance, together with the data management sent for invoicing or production assessments directly from the Excavator machines.

With **helperXE** installed onboard you are sure that each bucket is weighed, the load is within the allowed limits, the production is under control, the moved quantity is transmitted remotely for mining haulage analysis and stock inventory.

**helperXE** has been created following Vei twenty years experience on excavator application, the first in 1998. The arms, the bucket and the excavator inclination are controlled by inclination sensors without mechanical moving parts between the arms which can be easily damaged and have a certain wear and tear.

With Vei sensors the installation and setup are easy and fast because they can be installed in any arm's position without constrictions.

Try to imagine, if you have to install a sensor directly on the arm's pivot pin, making sure it is not axially offset and lever on the adjacent arm that has to make the sensor rotate accordingly while moving, the whole not built by the excavator manufacturer; the Vei sensors advantages are evident.

The Software, heart of the **helperXE**, allows you to follow in real time the position of each part and process the weight result in a deterministic and precise way, due to the many setting possibilities for controlling different working situations.

- **helperXE** manages your load flow for the best production control and sales invoicing.
- **helperXE** features a bright colour display that is unequalled elsewhere in the industry. Visibility in direct sunlight is assured.
- **helperXE** takes into consideration in-cabin space, ergonomics, visibility, ease of use and connectivity, while reducing the amount of componentry. In-cab space is optimised by the innovative design and applied electronics, which have permitted the building of a unique small device incorporating the printer, when necessary, continuing Vei versatility of the integration as always been in the past.



# Why install helperXE?

- High precision
- Minimum components with no junction boxes
- Avoid overload fines by loading right in the first place
- Reduce haulage cost avoiding underload
- Reduce cycle times at the weighing bridge
- Weigh bridges and associated running costs can be eliminated
- Track loading efficiency
- USB data transfer at no extra cost
- Help stock and sales tracking
- End-to-end management of the payload process, with print out of the delivery tickets and data sent to billing system in real time using wireless cellular technology
- Real time, web-based consultation of loading and production data from any work station, tablet or smart phone
- Easy-to-use thanks to the intuitive commands and guided data entry user interface made possible by the VEI innovative Operating System
- High-speed thermal printing
- The production plant can be loaded then suspended temporarily to load trucks. The system can manage simultaneous loading tasks (multitasking)
- Operator ID login with autolocking if not authorized
- Multiple weighing modes: Incremental, Target, Vehicle and Recipe
- Worldwide factory-trained support backup
- 3-year warranty, best in the industry



## Hardware Characteristics

|  |  |
|--|--|
| Power supply                                   | 9-36 Vdc                                 |
| Working temperature                            | -40°C - +80°C                            |
| Metrological accreditation working temperature | -25°C - +60°C                            |
| Measurement error (%)                          | 0 ± 2                                    |
| Shocks   | 40G tested                               |
| Protection class device                        | Device IP54. Sensors IP67                |
| Size   | 140 x 204 x 67 mm (5.5 x 8 x 2.6 inches) |
| Weight   | 928 g (2 lb)                             |
| Display  | HD colour TFT                            |
| Light ambient sensor                           | Day/night automatic display brightness   |
| Keyboard                                       | Membrane, lighted                        |
| Text editing                                   | Mobile phone type                        |
| Modem port                                     | RS232                                    |
| Printer port                                   | RS232                                    |
| Canbus port                                    | Can open                                 |
| USB port                                       | USB read/write                           |
| Remote keys                                    | Open contact                             |

## Software Features

|                                       |
|---------------------------------------|
| Auto-add                              |
| Tip off                               |
| Diverse tool's calibrations           |
| Unit of mass conversion               |
| Auto-power on                         |
| Auto-shutdown                         |
| Energy saving                         |
| Plant and trucks simultaneous loading |
| USB files backup/restore              |
| USB software update                   |
| USB/wireless data update              |
| Operator ID login                     |
| Split weighing                        |



# DELIVERY TICKET PRINTOUTS AND PRODUCTION REPORT

## VPRINT

Thermal high speed printing, indestructible when compared to the needle printer which is very sensitive to dust and mechanical breakdown. It can be fitted under the **helperXE** to produce a single, integrated unit or installed as a separate unit. The integration makes it the most compact unit in the market, easy to install and operative directly under the device without having to move away from it.



Truck load



Truck load history



Production by favorite elapse dates



Management data



Configuration data

### PRINTED INFORMATION INCLUDES:

- A** Site owner company with address
- B** Loading site with address
- C** Loading company with address
- D** Date and time of printout
- E** Loaded product
- F** Loaded weight
- G** Vehicle ID with preset target
- H** Number of weighings
- I** Multiple products loading
- J** Products overall total
- K** Recipe name
- L** Recipe products loaded
- M** Customer name with address
- N** Machine code
- O** Destination name with address
- P** Carrier name with address
- Q** Loading operator ID
- R** Ticket number
- S** Signature box
- T** Footer

Paper roll diameter 48 mm (1.9 inches). Paper width 57 mm (2.2 inches). Others printout formats are available. Please consult us with your requirements.

|                             |        |
|-----------------------------|--------|
| PORTLAND QUARRY             |        |
| 13 PEEK ROAD                |        |
| ROSKANK CITY                |        |
| OR                          |        |
| LOADING SITE                |        |
| CREEK VALLEY QUARRY         |        |
| LOADING COMPANY             |        |
| SMITH CONTRACTING AND CO.   |        |
| <b>D</b> 07/31/2017         | 16:04  |
| PRODUCT                     | WEIGHT |
|                             | (t)    |
| <b>E</b> ROCKS              | 23,45  |
| <b>G</b> Vehicle AC 455 RTS |        |
| NO. OF WEIGHINGS            | 5      |

|                           |         |
|---------------------------|---------|
| PORTLAND QUARRY           |         |
| 13 PEEK ROAD              |         |
| ROSKANK CITY              |         |
| OR                        |         |
| LOADING SITE              |         |
| CREEK VALLEY QUARRY       |         |
| LOADING COMPANY           |         |
| SMITH CONTRACTING AND CO. |         |
| 07/31/2017                | 14:50   |
| PRODUCT                   | WEIGHT  |
|                           | (t)     |
| <b>I</b> SAND             | 21,45   |
| GRAVEL                    | 15,20   |
| ROCKS                     | 45,45   |
| <b>J</b> TOTAL LOADED     | 82,10 t |
| NO. OF WEIGHINGS          | 13      |

|                           |        |
|---------------------------|--------|
| PORTLAND QUARRY           |        |
| 13 PEEK ROAD              |        |
| ROSKANK CITY              |        |
| OR                        |        |
| LOADING SITE              |        |
| CREEK VALLEY QUARRY       |        |
| LOADING COMPANY           |        |
| SMITH CONTRACTING AND CO. |        |
| 07/31/2017                | 11:15  |
| RECIPE                    |        |
| MAIN CRUSHER              |        |
| PRODUCT                   | WEIGHT |
|                           | (t)    |
| GRAVEL                    | 145,00 |
| Target                    | 145,00 |
| ROCKS                     | 110,00 |
| Target                    | 110,00 |
| LIMESTONE                 | 135,00 |
| Target                    | 135,00 |
| TOTAL LOADED              |        |
| 390,00 t                  |        |
| NO. OF WEIGHINGS          | 70     |
| CUSTOMER                  |        |
| PHILLIPS CONSTRUCTIONS    |        |
| MACHINE CODE              |        |
| HITACHI ZAXIS 350LCN      |        |
| DESTINATION               |        |
| WELLINGTON WAREHOUSE      |        |
| 20045 PINETREE            |        |
| LIVERPOOL                 |        |
| OR 50073                  |        |
| CARRIER                   |        |
| SOUTHEAST EXPRESS INC.    |        |
| 54 WELLINGTON ST.         |        |
| STOCKPORT                 |        |
| SK1 1PD                   |        |
| OPERATOR ID               | DAVID  |
| Ticket number             | 11     |
| SIGNATURE                 |        |
| QUALITY PRODUCTS          |        |
| SINCE 1983                |        |

|                           |                      |
|---------------------------|----------------------|
| WEIGHTS LOG FILE          |                      |
| TOTALS                    |                      |
| 07/31/2017                | 11:00                |
| START OF WEIGHING         | 07/31/2017 09:13     |
| END OF WEIGHING           | 07/31/2017 09:20     |
| PRODUCT                   | WEIGHT               |
|                           | (t)                  |
| SAND                      | 23,45                |
| NO. OF WEIGHINGS          | 5                    |
| NO. OF TICKET             | 1703                 |
| OPERATOR ID               | DAVID                |
| CUSTOMER                  | RICHARDSON PLANT LTD |
| DESTINATION               | PALM TREE DRIVE      |
| LOADING SITE              |                      |
| PORTLAND QUARRY           |                      |
| LOADING COMPANY           |                      |
| SMITH CONTRACTING AND CO. |                      |
| MACHINE CODE              |                      |
| HITACHI ZAXIS 350LCN      |                      |

Typical truck load history



### SLIP PRINTER

The slip printer generates 3 copies of delivery dockets in a pre-printed format. Ticket size 105 x 224 mm (4.1 x 9 inches)

# USB DATA TRANSFER AT NO EXTRA COST!

An added value, standard mounted in the device. Best deal of the industry.

With a built-in USB port as standard on **helperXE** you can use a commercial USB memory stick and download the loadings accomplished during the day without extra optional cost: it's all built-in. Read the USB memory stick in your PC and open your loadings by using a basic spreadsheet program like Excel; then import or export data as you like and where you like. The loadings data are saved onto your USB by date and time so no overwriting will happen and your imports will be easy to find.



Front USB port, compactness is standard

# REMOTE KEY

Remote your main keys

Bring your main 2 keys closer to your hand by using this small size remote keys box. It can be screw fixed or velcro attached to where it is more comfortable for your operation, usually the machine's right hand joystick.



# REMOTE DISPLAY

Display weight live outside the cabin

The remote display helps in those situations where the weight must be shown live outside the cabin. When loading a truck your customer has a real-time knowledge of how much weight you are unloading into the truck.



# IPOTWEB.COM MAKES YOUR BUSINESS MORE EFFICIENT

Payload monitoring software

Whether you use the USB or wireless data transfer, the payload's information ends up in a single database from where it can be exported to a billing software. With **ipotweb.com**, you can generate different types of reports, tracking down in real time your inventory, sales analysis and machine productivity. With **ipotweb.com** production and sales are linked to billing, cutting administration filing time drastically.

## Reports

- Loading movements
- Customers
- Vehicle IDS
- Report sorted by Customer and Product
- Report sorted by Product
- Report sorted by Machine



# IPOTAP, WHAT YOU WERE MISSING IS HERE

The remote display help in **Ipotap** is an ideal tool to control production and sales in real time directly from your pocket device. It is suitable for every kind of loading equipment: a front-end loader, an excavator, a reach stacker, a fork lift, a mining or road truck, a garbage collecting truck. **Ipotap** gives you the true insight of your machine production and sales. Imagine receiving vital information on your fleet production in real time while being seated somewhere else. **Ipotap** is supported by **ipotweb.com** a VEI production and sales data insight web portal connected wireless to your working equipment. **Ipotap** is a free download from the App Store and Google Play.



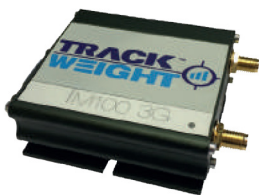
# TRACKWEIGHT RFLINK MOBILE

## Quad-band cellular modem

Stay connected to your loader 24/24, 7 days a week. Trackweight sends you real time data from your loader wherever you may be, all you need is an internet connection. Its compact function gives you:

- Unlimited transmission range
- Real time data transmission
- Production data at a selected email account.
- 100% data security as data is sent in real time and stored on a server provided for you.
- Automatic and direct billing without having to enter delivery tickets manually after they are printed on the loader.
- Easy management of all extraction sites located in and outside the country.
- Upgrade your scale data management remotely.

In order to use the Trackweight modem, the operator is required to open an account on ipotweb.com as the data will be sent to VEI servers from ipotweb.com and will be visible to the registered account only. Alternative data can be sent to a dedicated server other than VEI. Please contact a Trysome representative for further info.



## Radio modem. Real-time data transmission. Limited range

Ideal for short distance data transmission within the same site where the loading machinery is working. RFlink is in fact used when delivery tickets need to be printed at the exit of the loading site or inside industrial plants in order to transfer data in real time. Frequency and power transmission depends upon country of usage. It can be used for real time or delayed data transmission. If you want to take advantage of VEI Payload Monitoring software an account must be opened on ipotweb.com and an internet connection must be available on the job site. Otherwise the .txt files will be placed one by one into your preferred PC folder.



## WiFi

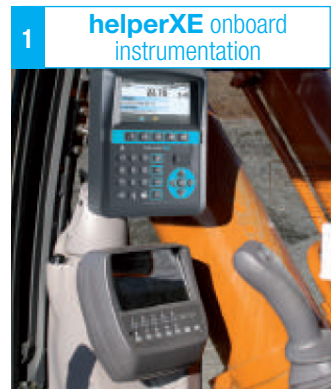
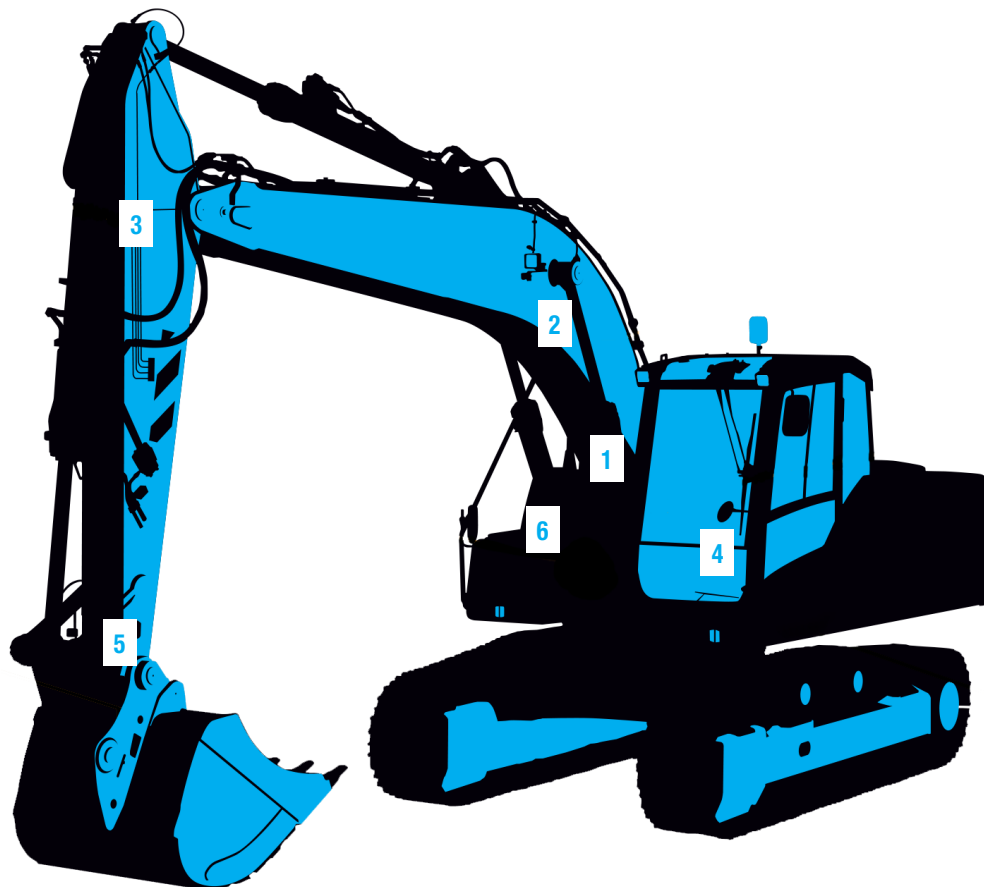
### WiFi modem

Ideal on job sites where a WiFi network is existing. Your loader will be part of the WiFi network in a matter of minutes and the loading of data will be available at your preferred location on the job site and web wide. Transmission range depends on your local access point. It can be used for real time or delayed data transmission. If you want to take advantage of VEI Payload Monitoring software an account must be opened into ipotweb.com and an internet connection must be available on the job site. Otherwise the .txt files will be placed one by one into your preferred PC folder.



# THE WEIGHING CONCEPT

The position of the sensors can be chosen and their mounting is easy and fast. **helperXE** is installed by trained personnel assuring a perfect fit into your machinery and delivering superior accuracy for a better optimization of your loadouts, production processes, sales analysis, inventory updates, truck load optimization, loading machines productivity. VEI scales are durable and **DESIGNED TO LAST**.





## OTHER FIELD APPLICATIONS



*This product may not be a stock item. Please speak to our sales representatives about lead times. Lead times, price and availability can only be determined on receipt of an official quote from our supplier. This can sometimes take up to 3 days.*

**Gauteng (HO):**

T: +27 (0)11 823 5650

**KwaZulu Natal:**

T: +27 (0)31 303 4129

**Northern Cape:**

T: +27 (0)53 723 3415

**North West:**

T: +27 (0)14 596 5257

**Mpumalanga:**

T: +27 (0)13 692 8132

**Western Cape:**

T: +27 (0)21 945 1453

**Zambia:**

T: +26 (0)21 222 5338

**Mozambique:**

T: +258 252 20666

**Botswana, Jwaneng:**

T: +267 72 226 699

**Botswana, Lethakane:**

T: +267 75 326 882

trading@trysome.cc • www.trysome.co.za • P.O. Box 13677, Witfield, 1467

Call us today!  
**TRYSOME**  
 AUTO-ELECTRICAL ENGINEERING