

**Star Spectrum™ back-up alarms provide the benefits of rich audible tones combined with the familiar sound of the traditional warning system.**

The Spectrum™ alarm uses a narrow array of frequencies resulting in a robust tone that is more easily tracked and recognised. The Spectrum™ alarm is individually programmed through a proximity fixture that incorporates the optimal frequency into each alarm.

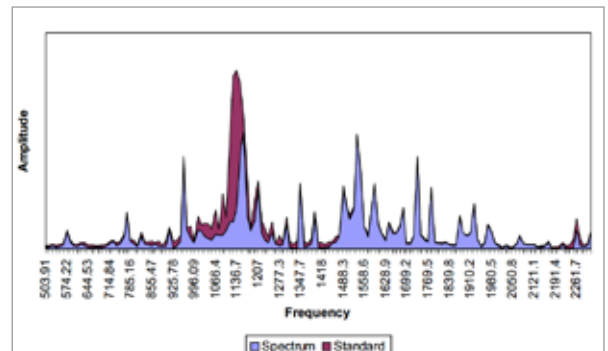
Our new 66 Series back-up alarms with CRS Technology™ incorporates a compact, rear-facing speaker with a heavy-duty housing to provide one of the most reliable sound chambers in the industry.

This design almost completely protects the speaker from the damage often caused by high pressure spray, dirt, and fine dust!



### Features:

- CRS Technology™
- Long term reliability
- Spectrum™ Frequency: 12 proprietary stepped frequencies from the base frequency
- Base Frequency: Approx. 1,300Hz
- Sound Pressure: 97dB
- Heavy duty plastic housing
- Industry standard mounting holes
- Voltage: 12-36 Vdc
- Amp Draw: 0.3 Amps
- Compact size
- Dimensions: 4-3/6"(W) x 3-1/16(H) x 2"(D)



Part Number	OE Number	Description
T175214705	66-097	Single Tone, 12V-36 Vdc, 97dB
T175214721	66-097DT	Dual Tone, 12V-36 Vdc, 97dB (Special Order)

AVAILABLE IN A VARIETY OF DECIBEL OPTIONS

This may not be a stock item. Please speak to our sales representative about lead times. Lead times, price and availability can only be determined on receipt of an official quote from our supplier. This can sometimes take up to 3 days.

#### Gauteng (HO):

T: +27 (0)11 823 5650

#### KwaZulu Natal:

T: +27 (0)31 303 4129

#### Northern Cape:

T: +27 (0)53 723 3415

#### North West:

T: +27 (0)14 596 5257

#### Mpumalanga:

T: +27 (0)13 692 8132

#### Western Cape:

T: +27 (0)21 945 1453

#### Zambia:

T: +26 (0)21 222 5338

#### Mozambique:

T: +258 252 20666

#### Authorised

#### Distributors:

#### Botswana:

T: +267 397 2457

#### Namibia:

T: +264 64 200566

trading@trysome.cc • www.trysome.co.za • P.O. Box 13677, Witfield, 1467