

## N200 HID

Heavy-duty  
5000 HR\* 35W  
D2S Xenon  
bulb pre-fitted  
(\*Depending on  
switch cycle)



Can be mounted  
in a vertical or  
pendant position

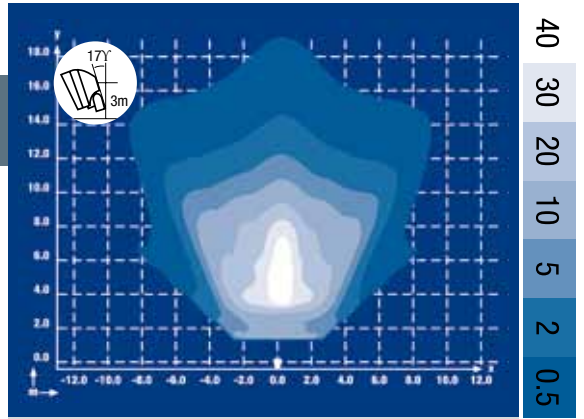


Heavy-Duty, Anti-Vibration  
Mounting System

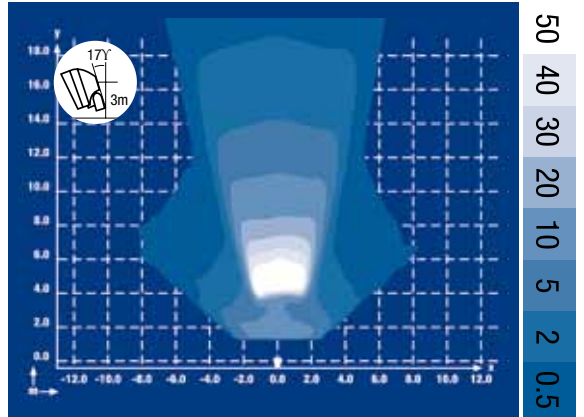


### Lighting Patterns N200 HID

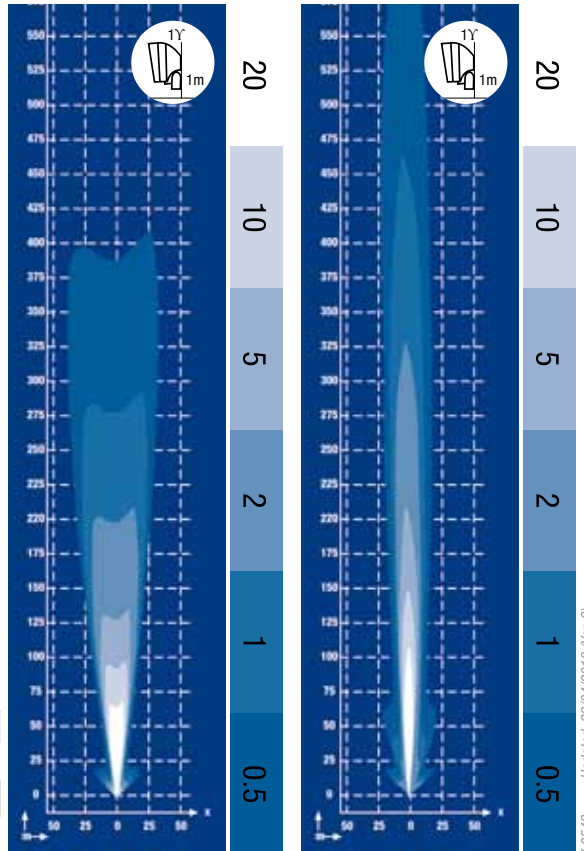
**lux**



Wide Flood



Flood

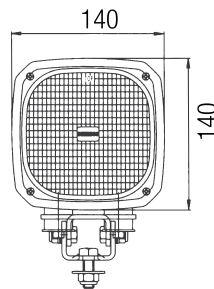
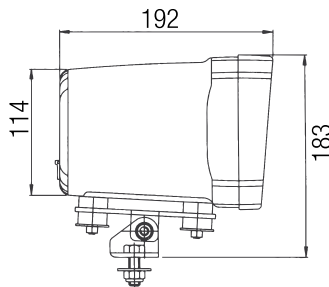


Low Beam

High Beam

### Features

- Ballast: Hermetically sealed in lamp body
- Nominal current:  
Start Up: 12V, 6.0A  
24V, 2.9A  
Steady state: 12V, 3.7A  
24V, 1.7A
- Colour temp: 4250K
- Operating Temp: -40°C to +85°C
- IP rating: IP 68
- Vibration: 12 G<sub>RMS</sub> 24 ...2000Hz
- Shock: 50 G
- Salt Mist: IEC 60068-2-11
- EMC according to ISO 13766
- Lens: Hardened Glass
- Body: Aluminum
- Weight: 2.4kg



| Part no. | Volts | Watt | Part no. | Volts | Watt |
|----------|-------|------|----------|-------|------|
| T911-004 | 12V   | 35W  | T991-202 | 24V   | 35W  |
| T911-002 | 12V   | 35W  | T991-203 | 24V   | 35W  |
| T991-003 | 12V   | 35W  | T991-204 | 24V   | 35W  |
| T991-201 | 24V   |      |          |       |      |