

Shovels, excavators and dump trucks are examples of complex machines that require clear vision which allows the operation to progress smoothly and safely.

Machines are increasingly becoming further advanced with elevated demands on efficiency and output. Still, it is people that are required to handle this equipment correctly. Operators have minimal vision around the vehicle. It is essential to solve large blind spots in a professional manner. This is where Orlaco's camera monitor solutions will help to improve operational efficiency and safety.



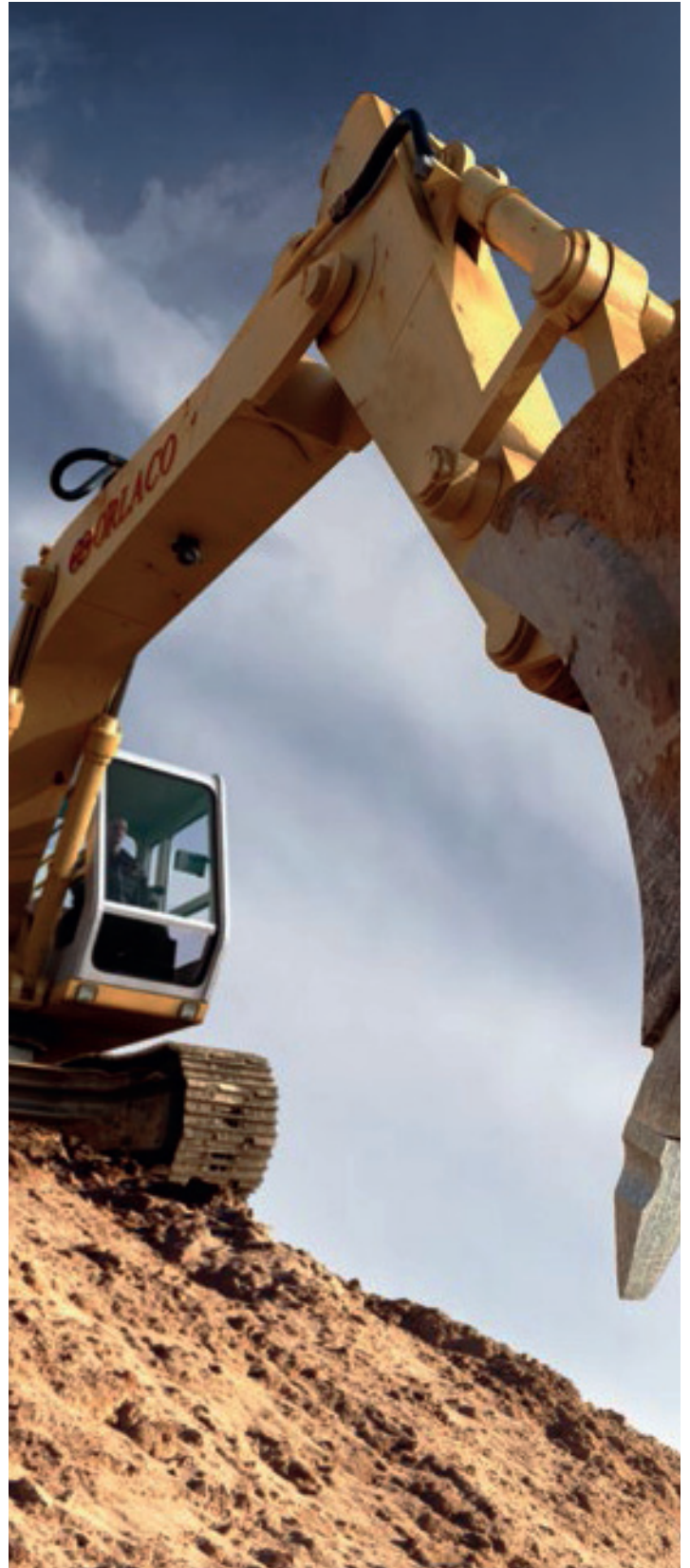
**7" (178 mm) RLED  
Monitor Serial R6**

TAE PN:  
T680014803

- Impact and vibration resistance that meets stringent requirements
- Power protected against induction voltages, load dumps and over and under voltage
- Mirror image setting
- Bright image. High resolution of 430.000 pixels
- High resolution pixel WVGA 800xRGBx480
- Brightness automatically adjusts to the ambient light
- Option of a marker line per camera on the screen for optimum determination of distance
- Integrated sun visor
- IP 67 according to IEC 60529
- Full on-screen-display (OSD) in 15 languages
- 6 m multi cable (power) open wired, 6 m multi cable (video) with 7-pin female connector
- User-adjustable 132 mm mounting bracket

#### Technical Specifications

Input Voltage	12...60 Vdc $\pm$ 10%
Weight	2.6 kg
Operating Temperature	between -40°C ~ +85°C





TAE PN:  
T680014812

## AMOS 118° ATVC NTSC Mirror Camera Set

- Self cleaning camera set
- Including control unit for input/output ATVC (All Time Vision Camera)
- NTSC mirror
- 118°
- Next generation CMOS sensor
- Rotation endless 360°
- 0.5 m video cable 7p and 0.5 m water hose with valve to connect to water pump
- The connection between the ATVC I/O box and the ATVC camera much be made via a cable with 7-pin connectors

### ATVC - All Time Vision Camera

The camera has a self-cleaning mode. The camera lens is built in a glass tube which can rotate via an industrial stepping motor. Upon activation, water (eg: wiper fluid) is sprayed onto the glass surface via a nozzle, the rotation is activated and the glass surface is cleaned via a built-in wiper. The stepping motor is controlled via the I/O box. Activation is done via the Orlaco Monitor or an input in the I/O box.

The ATVC I/O box is powered with a separate dedicated 24 Vdc power supply (not via the Orlaco monitor). The ATVC I/O box supplies power to the camera and the optional pump/water tank.

The AMOS 118° ATVC PAL is supplied in mirror mode. The camera is designed to be applied as a rearview camera making it easy to adapt to third party monitors.

### Technical Specifications

Weight	1.9 kg
--------	--------



TAE PN:  
T680014814

## ATVC Pump Reservoir

The water pump has a 6 litre reservoir for the washer fluid. The pump is connected to the ATVC I/O box (cable included with the ATVC I/O box)

- Includes mounting brackets
- Excluding water hose

### Technical Specifications

Reservoir Capacity	6 litres
Voltage	24 V



TAE PN:  
T1100024133

## Standard Multi Cable

This standard cable can be used if no special requirements like mechanical protection or dynamic movement of the cable is needed.

### Technical Specifications

Length	6 m
Connector	7 p moulded



These may not be stock items. Please speak to our sales representative about lead times. Lead times, price and availability can only be determined on receipt of an official quote from our supplier. This can sometimes take up to 3 days.

#### Gauteng (HO):

T: +27 (0)11 823 5650

#### KwaZulu Natal:

T: +27 (0)31 303 4129

#### Northern Cape:

T: +27 (0)53 723 3415

#### North West:

T: +27 (0)14 596 5257

#### Mpumalanga:

T: +27 (0)13 692 8132

#### Western Cape:

T: +27 (0)21 945 1453

#### Zambia:

T: +26 (0)21 222 5338

#### Mozambique:

T: +258 252 20666

#### Authorised Distributors:

#### Namibia:

T: +264 64 200566